

The letters "UC" in a bold, sans-serif font, colored in a light orange or peach tone. The background of the slide is a textured orange with abstract, wavy patterns in shades of blue and purple on the right side, resembling a topographic map or a stylized landscape.

UC

Legal Problems – GIS Solutions

Seth C. Behn, AICP, Esq.

An Attorney Learns to Georeference & Digitize

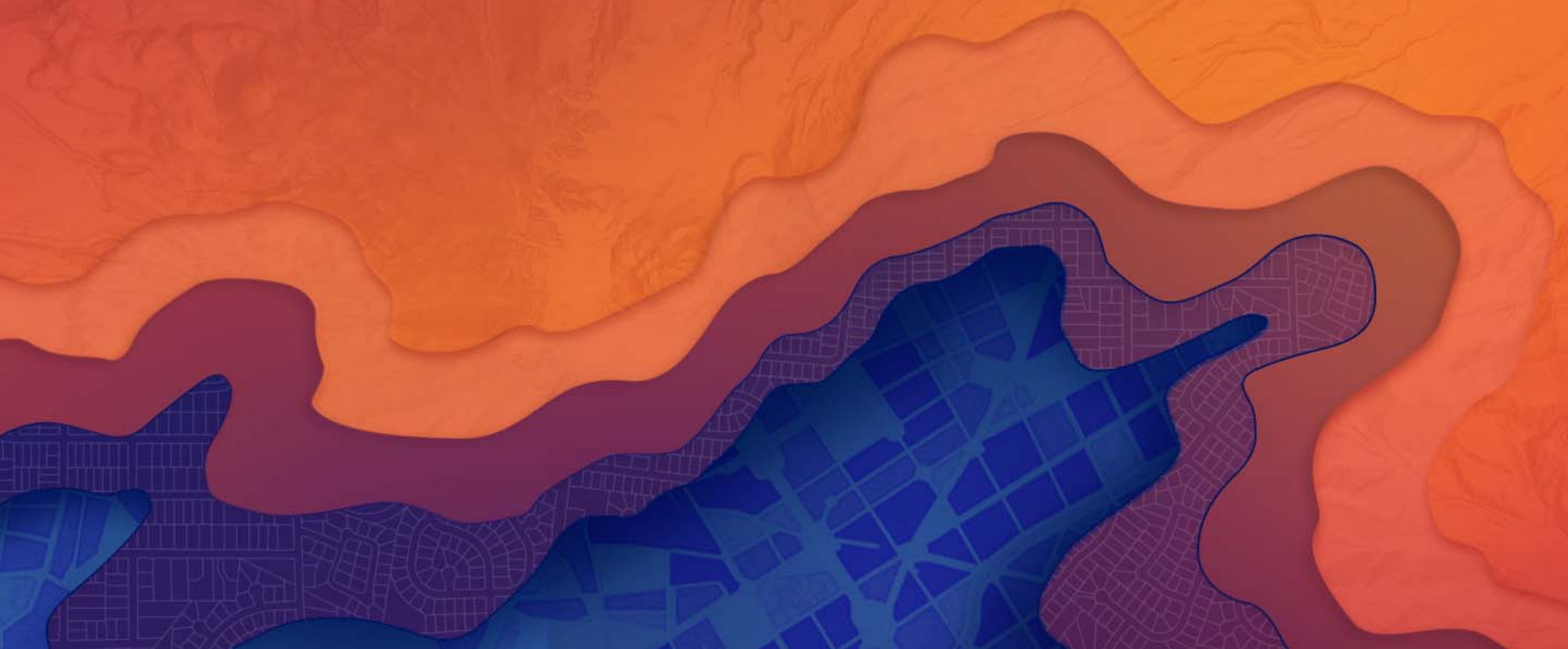
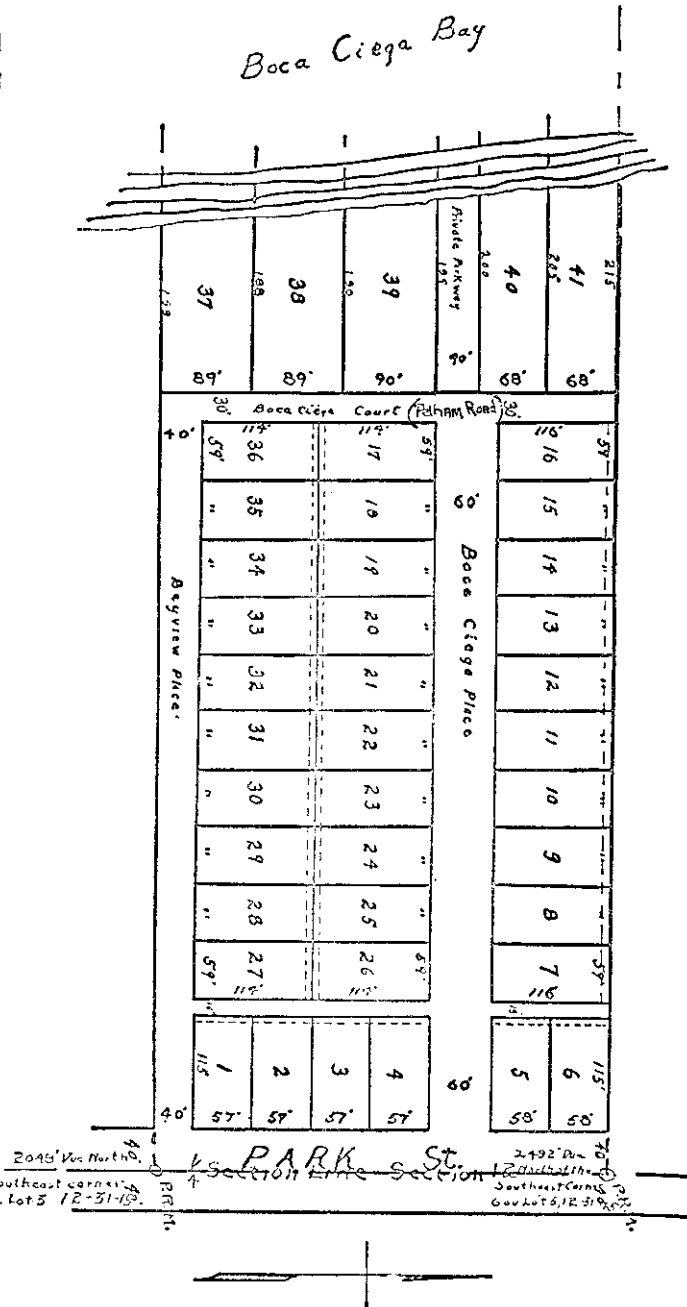


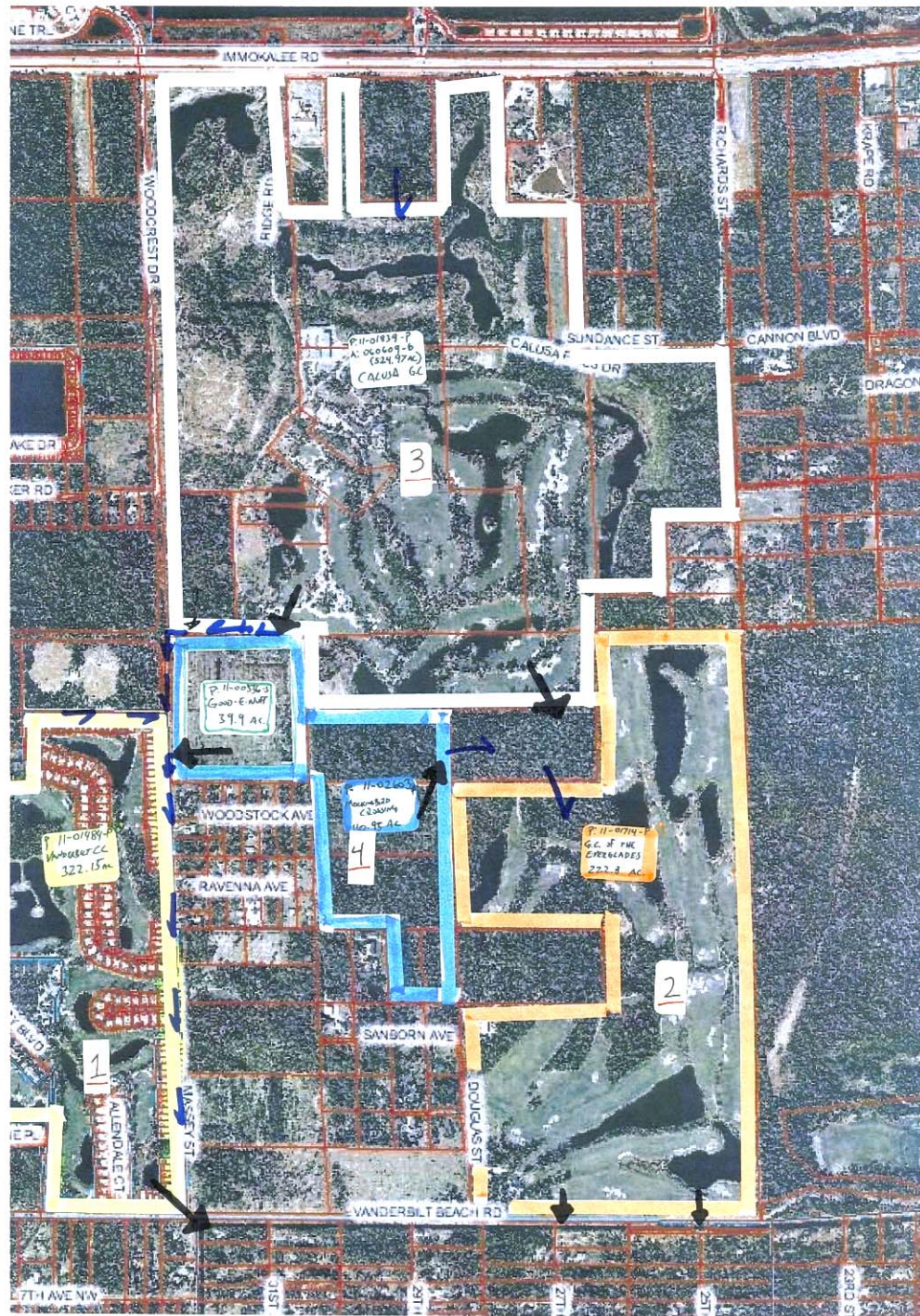


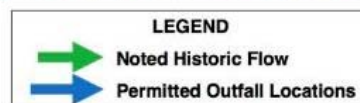
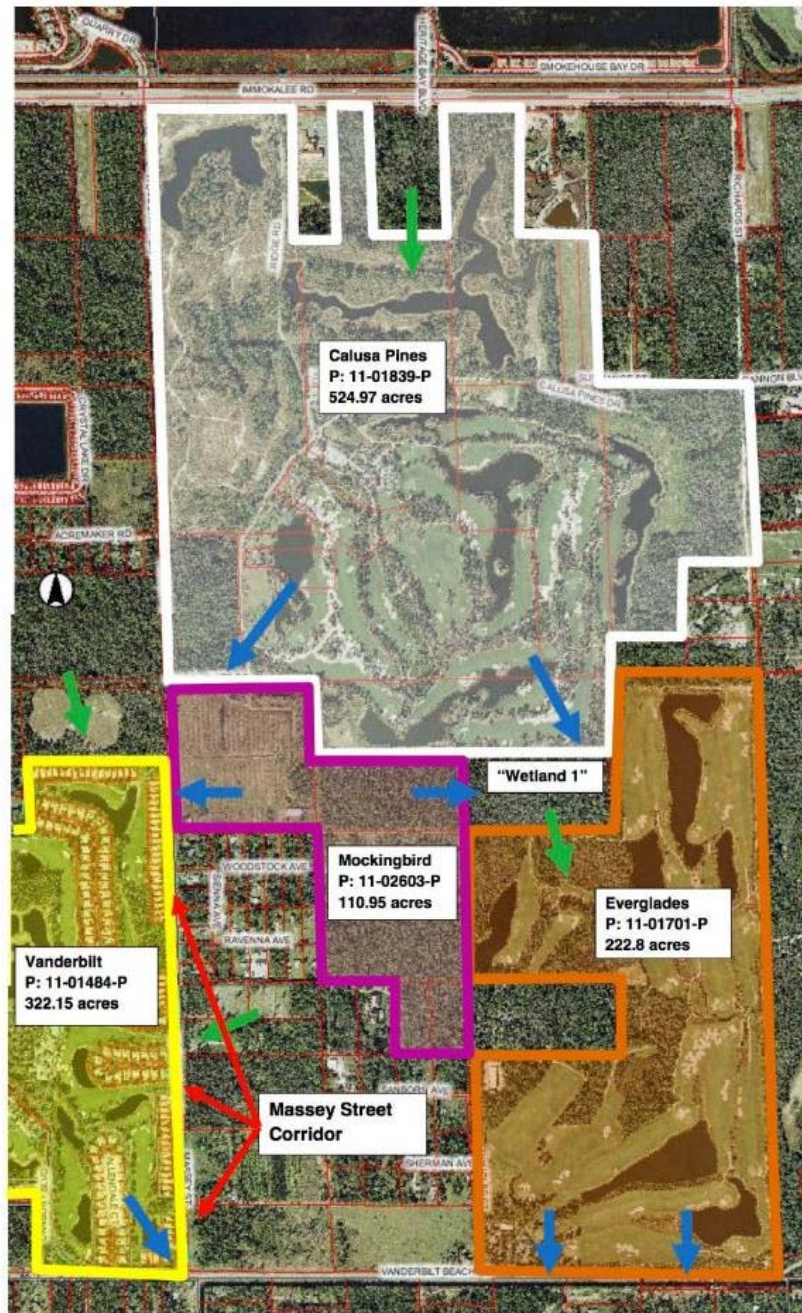
Photo By: Author

JUNGLE SHORES NO. 6.



Cartish v. Soper,
157 So. 2d 150, 151
(Fla. 2d DCA 1963)




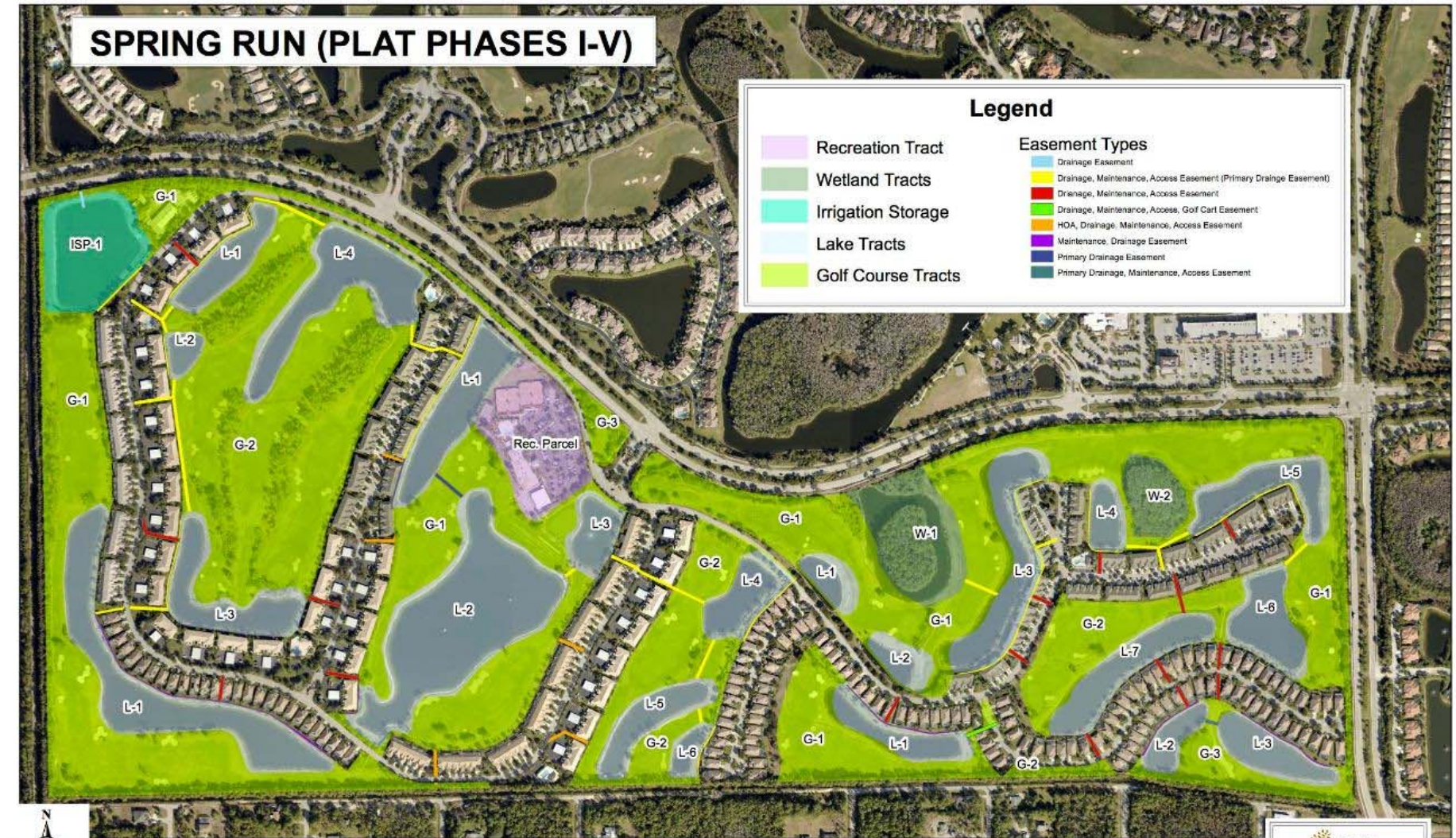




SPRING RUN (PLAT PHASES I-V)

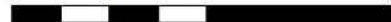
Legend

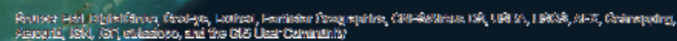
	Recreation Tract		Drainage Easement
	Wetland Tracts		Drainage, Maintenance, Access Easement (Primary Drainage Easement)
	Irrigation Storage		Drainage, Maintenance, Access Easement
	Lake Tracts		Drainage, Maintenance, Access, Golf Cart Easement
	Golf Course Tracts		HOA, Drainage, Maintenance, Access Easement
			Maintenance, Drainage Easement
			Primary Drainage Easement
			Primary Drainage, Maintenance, Access Easement



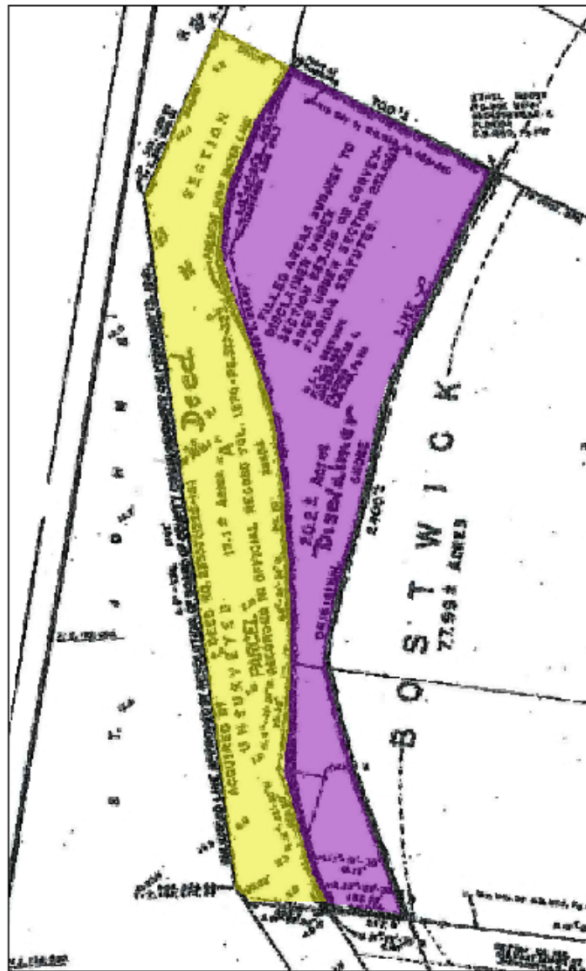
Map for illustration purposes only. All locations are approximate.
 Data Source:
 Aerial and Parcel Data - Lee County
 Easements: Recorded Plats for Spring Run

0 375 750 1,500 Feet

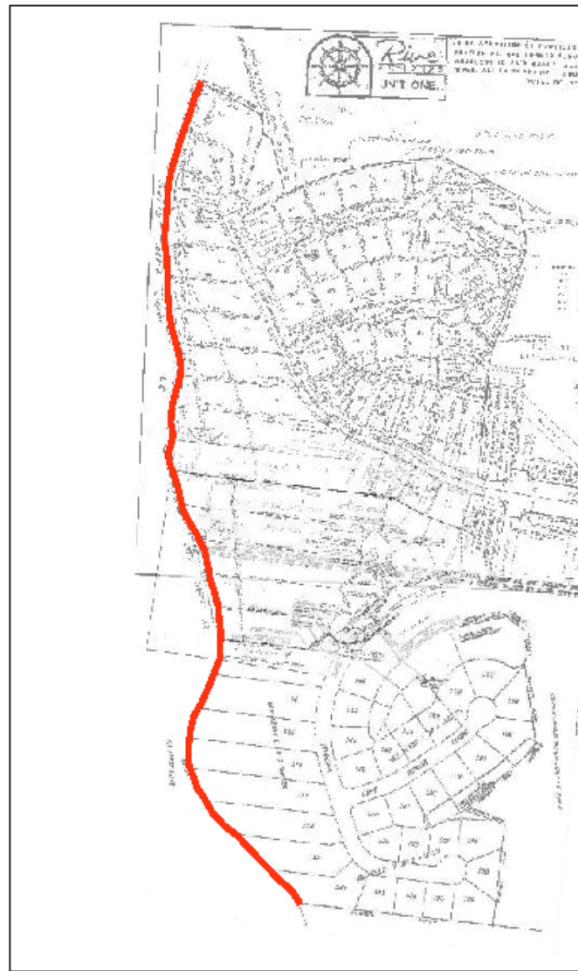




LLW LEWIS
LONGMAN
WALKER



Survey from Complaint
Showing TIF Deed (ORB 1870/322)
and TIF Disclaimer Areas

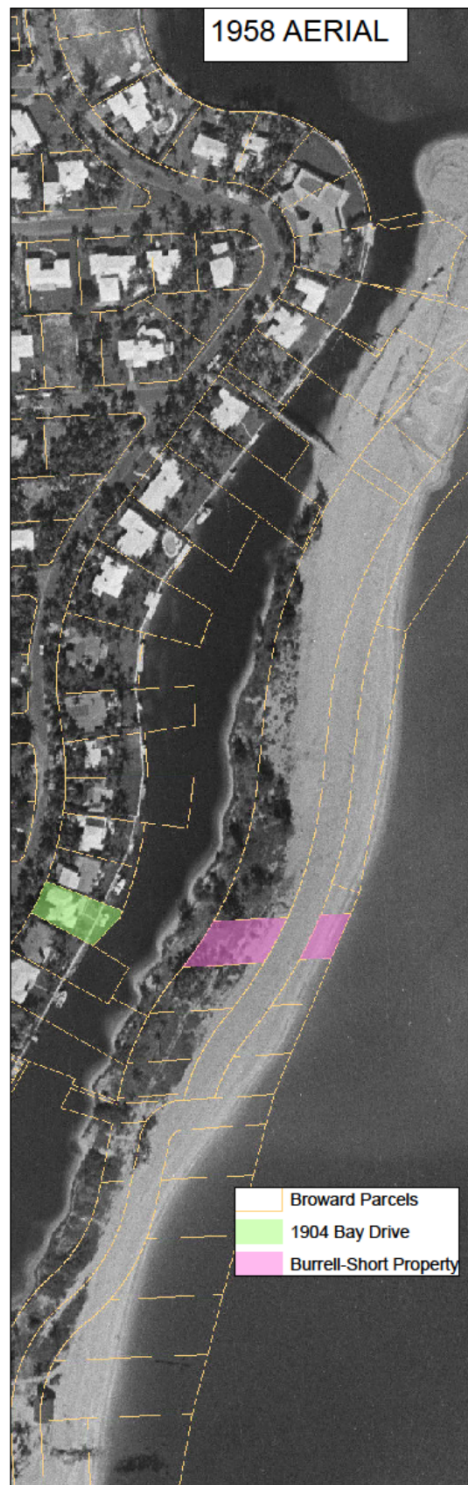


Plats Showing Water
Boundary Limits

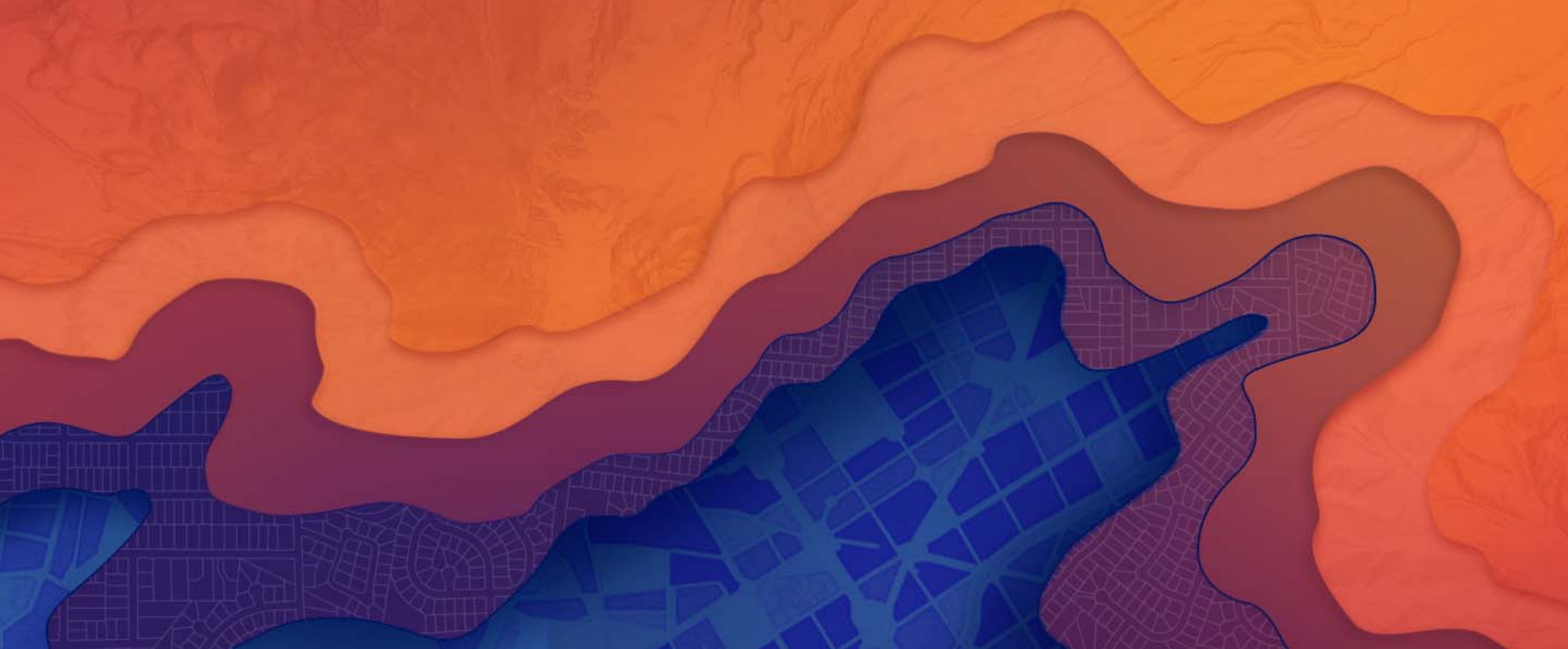


Illustration Showing Plat Limits
within TIF Deed Area

Source: Aerials and Parcels - Duval County Property Appraiser; Plats - Duval County Clerk of Court
Note: Not a survey; for illustration purposes only.



New Challenges



Estero Island

<https://earthengine.google.com/timelapse>



Photo By: 2015 Fish & Wildlife Foundation of Florida, Inc.

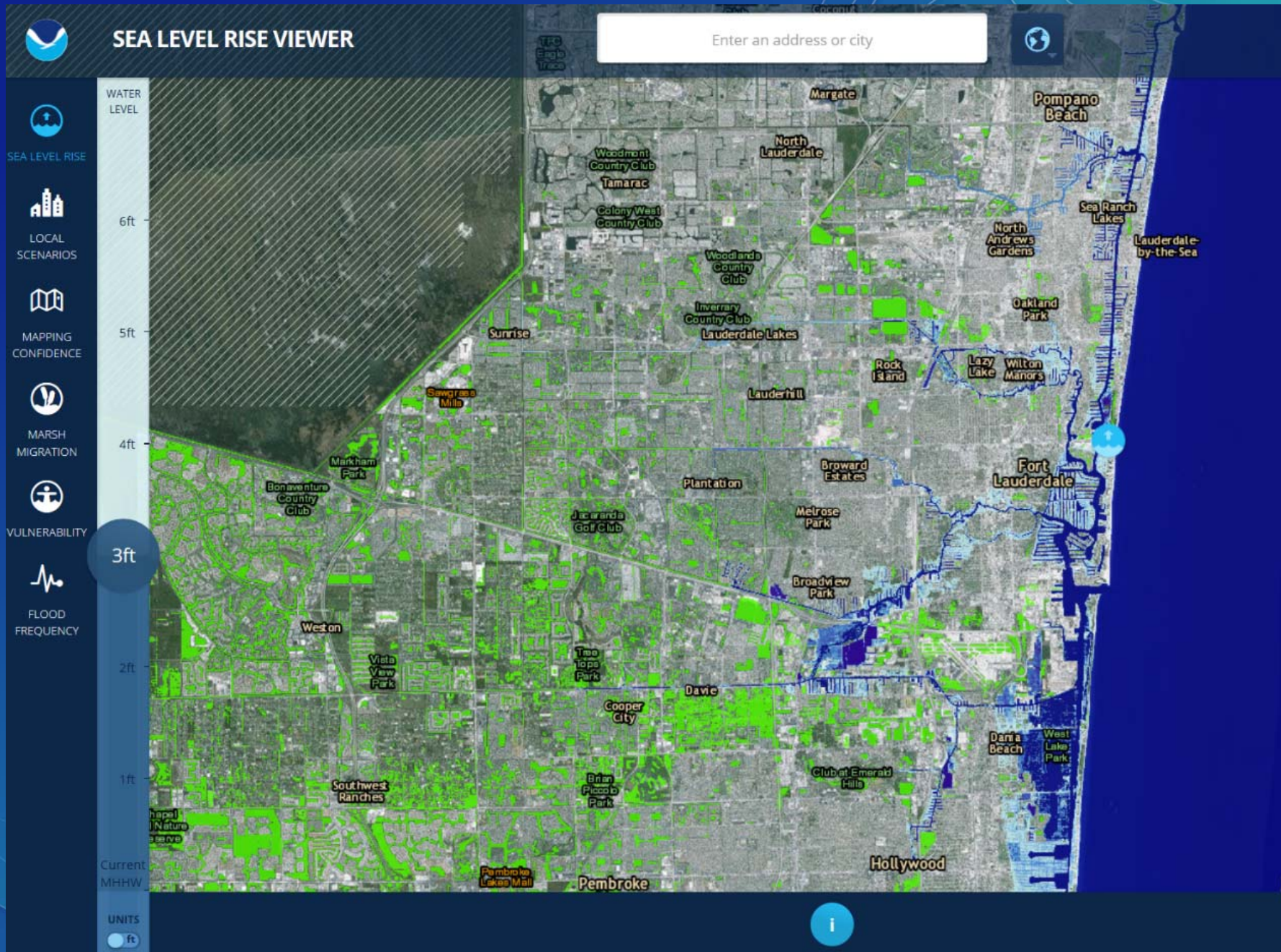
The title to lands under navigable waters, within the boundaries of the state, which have not been alienated, including beaches below mean high water lines, is held by the state, by virtue of its sovereignty, in trust for all the people.

- Florida Constitution, Article X, § 11

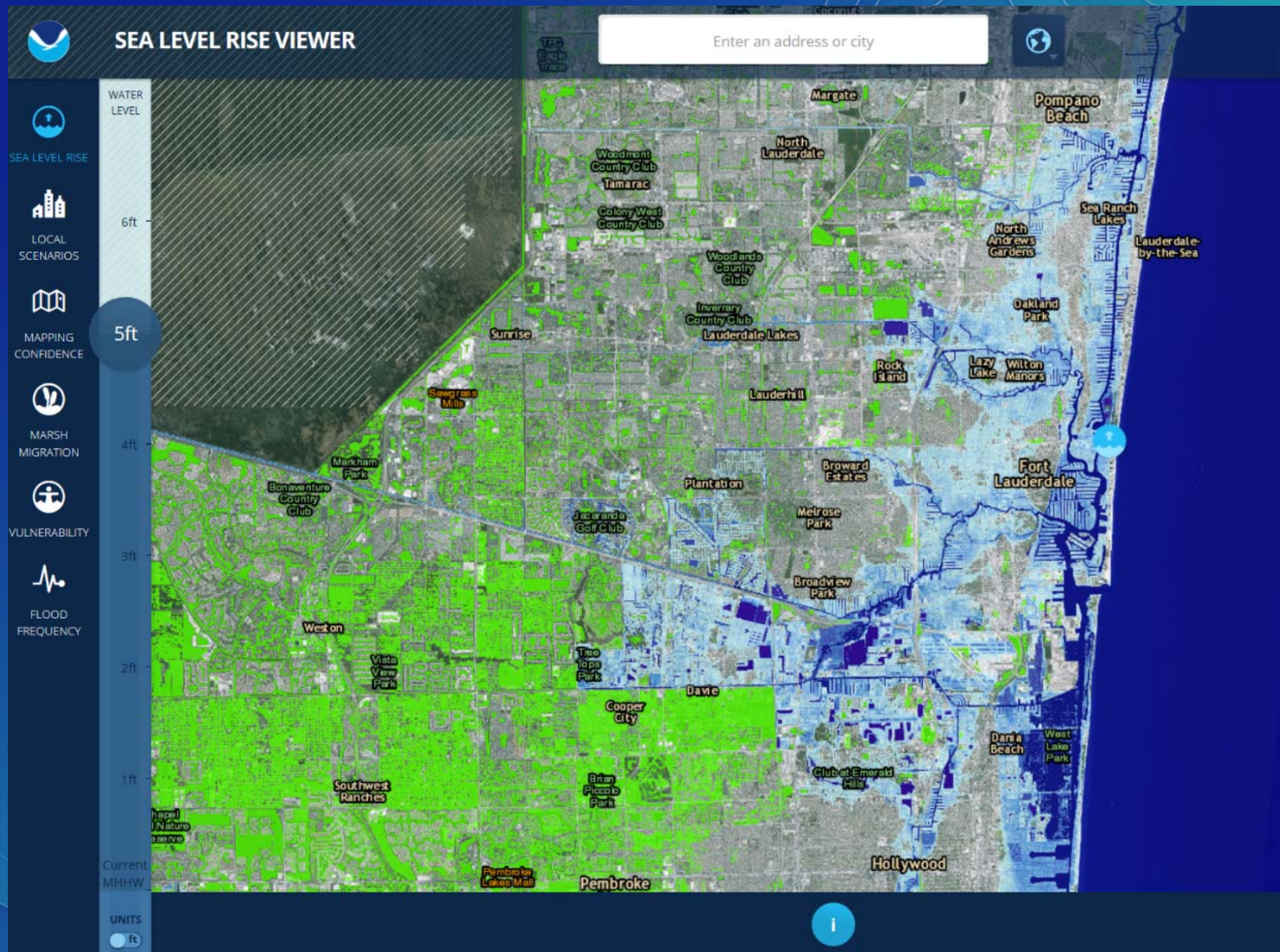
And as to lands gained from the sea, either by *alluvion*, by the washing up of sand and earth, so as in time to make *terra firma*; or by *dereliction*, as when the sea shrinks back below the usual watermark; in these cases the law is held to be, that if this gain be by little and little, by small and imperceptible degrees, it shall go to the owner of the land adjoining.... [T]hese owners being often losers by the breaking in of the sea, or at charges to keep it out, this possible gain is therefore a reciprocal consideration for such possible charge or loss.

Bd. of Trustees of the Internal Imp. Trust Fund v. Sand Key Associates, Ltd., 512 So. 2d 934, 936 (Fla. 1987)





<https://coast.noaa.gov/slr/#/layer/slr>



<https://coast.noaa.gov/slr/#/layer/slr>



Photo By: Kevin Fisher.
Used with permission.

The letters 'UC' in a large, bold, orange font, positioned in the upper left corner of the slide. The background is a textured orange with abstract blue and purple shapes on the right side.

UC

Thank You!

Seth C. Behn, AICP, Esq.

SBEHN@LLW-LAW.COM

Note: All images not cited are the work of the author and were prepared with data within the public realm.